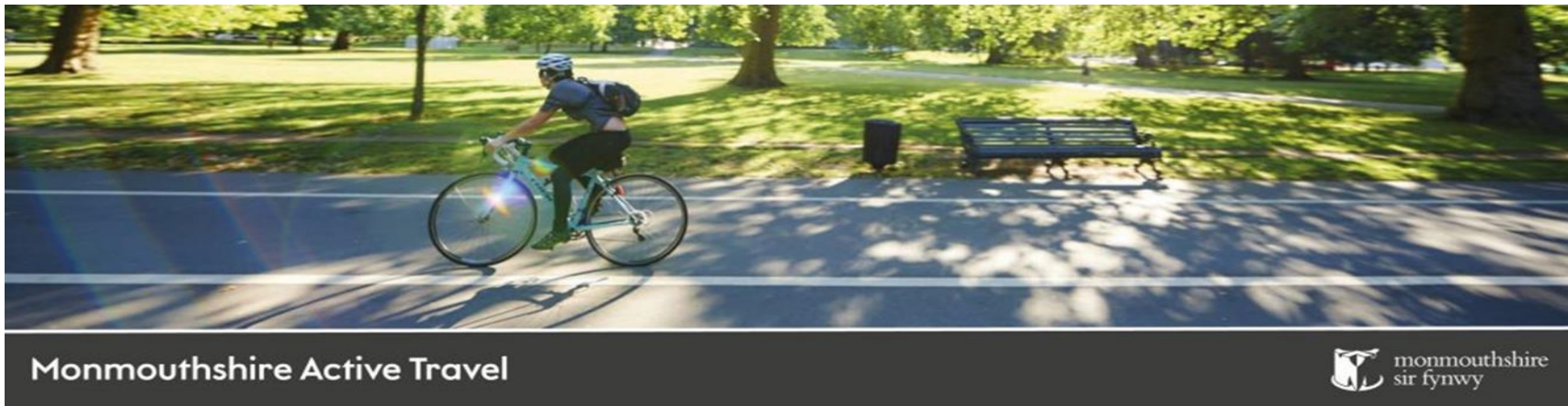


# Active Travel Update – 14<sup>th</sup> February 2022



Ian Saunders – Chief Operating Officer, MonLife

Paul Sullivan - Youth, Sport and Active Travel Manager

Nick Tulp - Active Travel Officer

Duncan Thompson – Project Support Officer, Active Travel

# Active Travel (Wales) Act - 2013

- The Active Travel (Wales) Act 2013 came in to effect on the 4<sup>th</sup> November 2013.
- The Act requires local authorities to continuously improve facilities and routes for pedestrians & cyclists.
- Also, to prepare maps identifying current and potential future routes for their use (Active Travel Network Maps).
- Active Travel access should be considered for all new housing developments, schools and highways infrastructure - not only projects relating to Active Travel Funding.
- The Aim of the act is to make walking & cycling the natural choice for short journeys.

# What is Active Travel?

- Walking, cycling and wheeling for everyday short journeys to replace car travel (modal shift) in order to get to a destination (such as; job, shops, train station or education).
- Active Travel does not cover walking and cycling done purely for pleasure, although it could significantly enhance leisure activities by helping link up networks.



Typically around  
2 miles



Typically up to  
5 miles

# How Does AT Fit With Monmouthshire's Corporate Plan

- It fits Our Purpose –
  - Ambitious, Fair, Sustainable, Proud to call home
- It is Our Values –
  - Teamwork, Openness, Flexibility, Fairness, Kindness
- It fits Our Principles –
  - Looking to the Long Term, Integrated Approach, Involving People, Working Collaboratively, Tackling the Root Cause
- Contributes towards our longer term challenges
  - Tackling the Climate Emergency - transition towards net zero
  - Improve Health Inequalities boosting access to local amenities
  - Supports our Health and Well Being agenda
  - Entwined with Well-being of Future Generations (Wales) Act
- Key projects listed in Our Actions.....



## Looking Ahead, Delivering Now Our Strategy to Summer 2022

We have been asking ourselves some very big questions. Where now and where next for our county?

We need Monmouthshire to be a place where every community is full of opportunity. We want to be a kind county where we do well by doing good things. We are invested in our place, your family and your future. You have a right to receive good services from us and we won't let you down but the expectations we have of ourselves go further.

The contemporary policy challenges that we need to meet together are centred on Net Zero, taking on the determinants of health inequality, making sure our children do well and ensuring that nobody is left behind. We are turning our attention to these things between now and the summer of 2022 when a new Council Administration will be ready to introduce its own direction. We cannot lose time, we have to move forward. We do so with your best interests at heart. We do so blessed with incredible communities and people that care about their place and each other.

We have set out our purpose, our priorities, our values and we ask that you join with us in achieving them. Without you we are just a Council, together we are a force to be reckoned with. Everything starts with your health and well-being and that of your family and friends - without that, everything else is pretty meaningless.

### Our Purpose

We want Monmouthshire to be:

- an ambitious place full of hope and enterprise
- a fair place where your family is safe
- a sustainable place where people care about each other
- a place you are proud to call home

### Our Values

Our purpose is underpinned by a clear sense of who we are as an organisation. We expect people who work with us to share a strong value set and expect that these are evident in the ways in which we work and engage with our communities.

- **Teamwork** - We will work with you and our partners to support and inspire everyone to get involved. We will make the best of the ideas, and resources available to make sure we do the things that most positively impact our people and places.
- **Openness** - We are open and honest. People have the chance to be involved and tell us what matters.
- **Flexibility** - We are flexible, enabling delivery of the most effective and efficient services. This means a genuine commitment to working with everyone to embrace new ways of working.
- **Fairness** - We provide opportunities for people and communities to thrive. We will always try to treat everyone fairly and consistently.
- **Kindness** - We will show kindness to all those we work with, putting the importance of relationships and the connections we have with one another at the heart of all interactions.

### Our Principles

We are advocates of The Well-being of Future Generations Act and apply the principles that underpin it to our decision-making:

- Looking to the long term so that we do not compromise the ability of future generations to meet their own needs;
- Taking an integrated approach so that we maximise the impact of all of our objectives;
- Involving people in the decisions that affect them;
- Working with others in a collaborative way to find shared sustainable solutions;
- Understanding the root causes of issues to prevent them from occurring.

### Our Actions

An ambitious place full of hope and enterprise

- Begin to build a new, carbon neutral, school in Abergavenny and develop a detailed plan for the future of Chepstow School ahead of Band C of the 21st Century Schools Programme;
- Invest more than £2 million to upgrade and redevelop the leisure centres in Chepstow and Abergavenny;
- Work with technology companies to ensure more households and businesses can benefit from high speed broadband, using fibre to the premises and speeds of up to one gigabit per second;
- Make a substantial investment in maintaining and repairing the highways network;
- Improve connectivity and create more sustainable transport through projects such as the redevelopment of Severn Tunnel Junction station and push for the development of Magor Walkway station;
- Act on the findings of the recent Chepstow transport study report to improve traffic and travel movements in and around Chepstow and the surrounding area;
- Begin significant improvements to the active travel networks in Monmouth, Caldicot and Abergavenny to make it easier for people to walk and cycle in and around our towns.

A fair place where your family is safe

- Recruit and retain more in-house foster carers to ensure that children who are looked after can grow up in a stable and supportive home;
- Identify solutions to prevent homelessness and providing support for those who find themselves without a roof over their head;
- Progress the development of a new dementia friendly care home at Crick Road;
- Work with partners to manage the additional health and social care pressures that winter can bring including recruiting and retaining the vital key workers who deliver front-line care.

A sustainable place where people care about each other

- Work with community groups to deliver the Magor with Undy Community Hub project; creating a new space for social, culture, leisure, sporting and other community activities;
- Ensure that more of our money is spent locally and ethically;
- Enable people to get more involved in shaping what happens in their area by making it easier to participate in local decision-making.

A place you are proud to call home

- Refurbish the Borough Theatre in Abergavenny ahead of a re-opening;
- Promote and support local food growing, reducing food miles, promoting sustainable land management and agricultural practices and reducing food waste;

- Work with all partners to improve the health of our rivers while also taking action to minimise the impact of flooding on communities;
- Make community learning more accessible to improve skill levels and create opportunities for people to try new things and form new friendships in a supportive and welcoming environment;

As we deliver these we will ensure that we do not do anything that will conflict with our emerging thinking on the long-term challenges we face.

### Our Longer Term Challenges

Covid-19 has brought into a sharp focus the complex challenges that communities and public service organisations face. We will develop our thinking and ideas as we plan for the longer term. We want to do this alongside Monmouthshire's myriad of community groups and our public service partners to understand what matters and ensure that we have bold and ambitious programmes. We are focusing on:

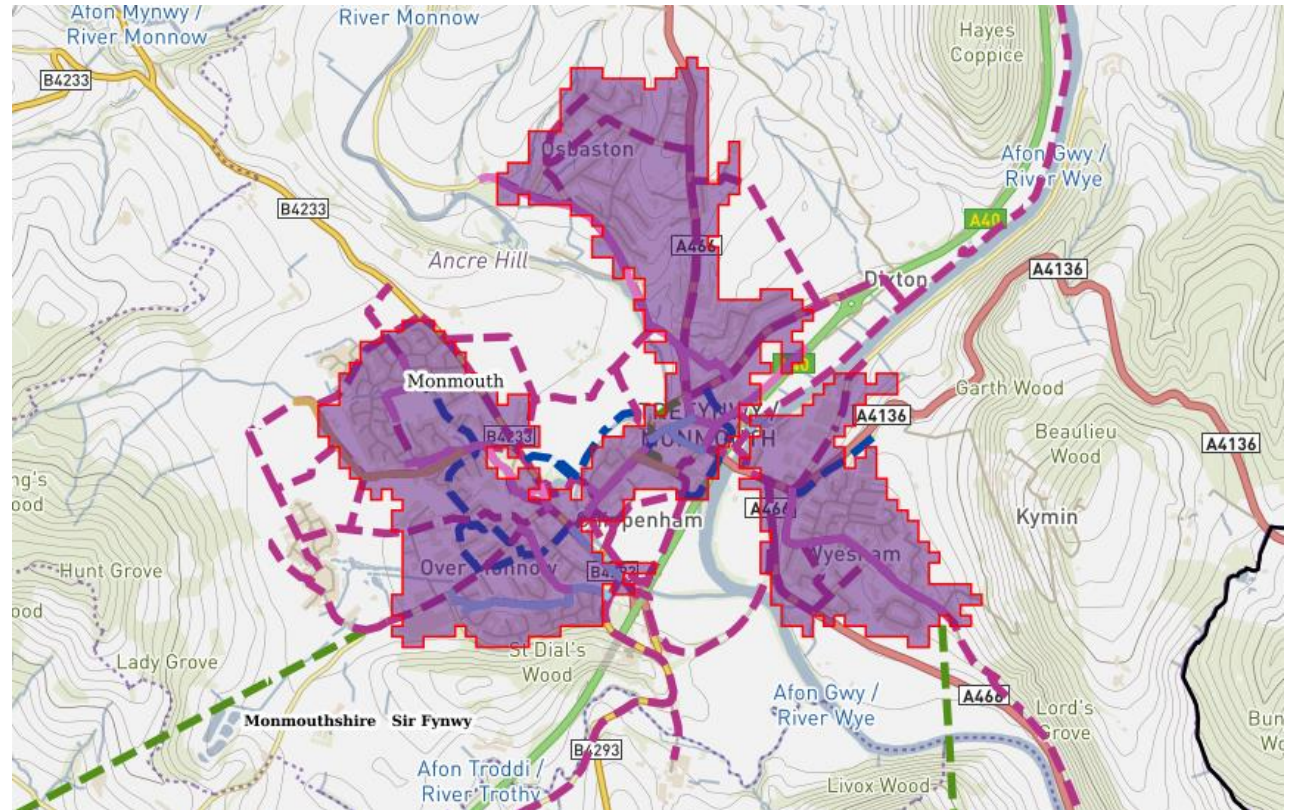
- **Transition towards Net Zero** - We need to increase the pace with which we are decarbonising our operations while developing guidance and support to help individuals and businesses reduce their emissions. We updated our decarbonisation action plan in November 2021 and will be working on a more ambitious programme which will be published in 2022.
- **Health Inequalities** - We need to narrow the differences in life expectancy in, and between communities. These gaps sometimes exist because of non-medical factors like early childhood development; the availability of local amenities and places where people can build connections; their diet and job security. These are sometimes called the social determinants of health.
- **Social Care Reform** - Services for children and adults are experiencing acute pressures from a combination of factors. We need to work closely with colleagues in Welsh Government and the NHS to ensure we have the right resources in the right places for the health and social care systems to work in equilibrium with vulnerable people supported in the most appropriate setting.
- **Well-being of Children and Young People** - We need to ensure that children whose learning has been disrupted by the pandemic are able to make up for lost time, are not at a disadvantage in the long-term and ensuring that support is available to support their well-being.
- **Mental Health** - With one in four adults and one in ten children experiencing mental health problems in any given year this is a significant challenge and public services must work together to ensure the availability of information and resources so that people can protect and manage their own mental health and well-being.

In the meantime, we will continue to focus on deliver in key areas, ensuring that we do not do anything that will conflict with our emerging thinking on the above challenges.



# Monmouthshire Settlements

- Related to our most urban areas (2,000+ population) there are 7 settlements in Monmouthshire with each having a distinct boundary.
- Abergavenny
- Caldicot
- Chepstow
- Gilwern
- Magor and Undy
- Monmouth
- Usk



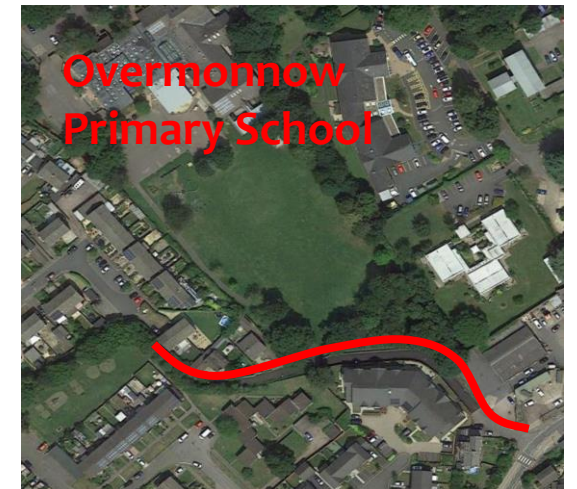
## 2 Year Progress

- Active Travel was repurposed to MonLife at the start of 2020.
- Award of **£1.8m** for financial year 2020/21 and **£3.0m** for 2021/22.
- Town Infrastructure has increased for **163 bikes** and **13 public bike pumps**.
- ***Active Travel Governance Group*** formed.
- Active Travel set as a standing item on the ***Education Wellbeing Group***.
- Aligned the Active Travel agenda with cross cutting policies such as climate change, decarbonisation, GI and future generations / wellbeing objectives.
- Developed a more holistic approach to Active Travel with service areas right across Monmouthshire engaged – with praise received on a national level.



# Infrastructure works completed to date

- Abergavenny - Lion Street
- Caldicot - Church Road Phase 1
- Caldicot – Newport Rd Trial closure
- Monmouth - Kingswood Gate – WFL Phase 1





# 2 Year Progress Continued

## Active Travel



Increased cycling infrastructure for **163** bikes in and around town centres.

**£4,079,447** of grant funding received for Active Travel Improvements.  
**65,844** social media impressions for our ATNM Consultation.

**13** public bike pumps installed across Monmouthshire.  
**49** projects developed to help increase Active Travel.

**£158,000** of grant funding received to support walking and cycling in response to Covid.

**100** routes now passed as compliant with the national guidance, an increase of 73 since 2016.





# Financial Year 2021/22

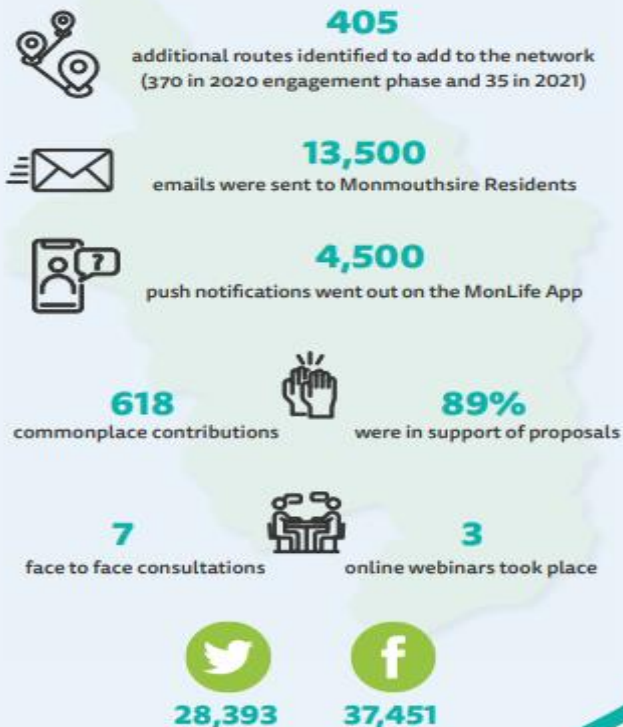
Works to be commenced by end of financial year:

- Monmouth - **Old Dixton Road** – Key route to comprehensive school and leisure centre, providing a 3m shared path.
- Monmouth - **Kingswood Gate – WFL Phase 2** – Educational link to Overmonnow Primary, with install of- new playground through ATF funding.
- Caldicot - **The Cross – Crossing** – crossing facility to be installed from community engagement.
- Statutory duty - ATNM Consultation – Successfully delivered on time.

# ATNM Consultation

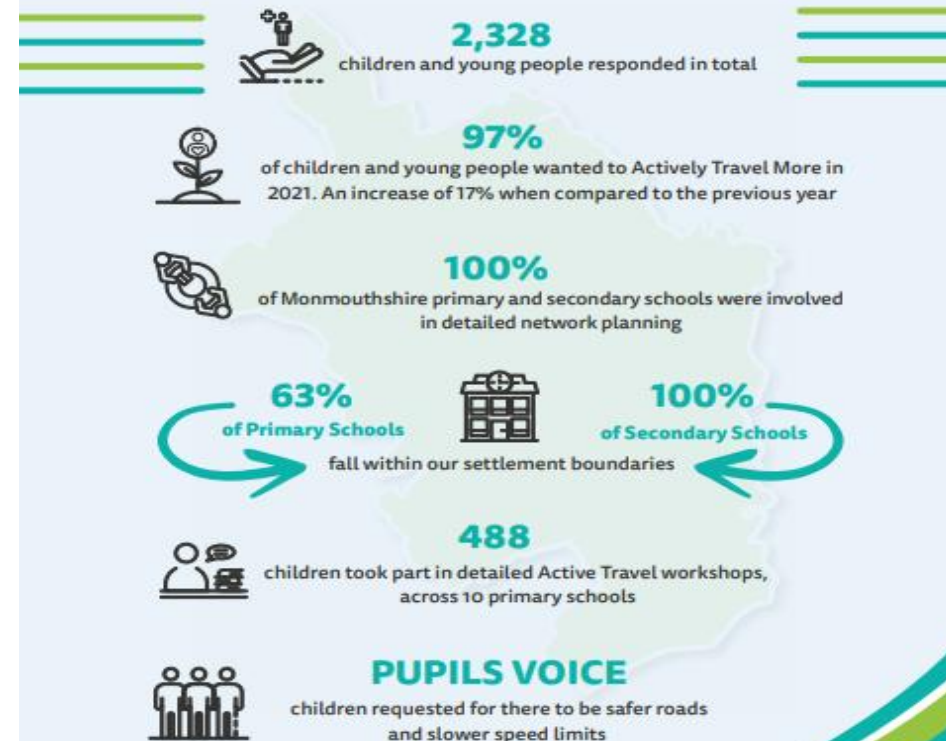
## Final Statutory Consultation 2021

Throughout both the engagement phase and statutory consultation we have seen such a positive response from all ages, the data captured will help us inform future funding bids and enhancements to our network. Thank you to everyone involved in the process for taking the time to contribute and to help shape the future of Active Travel right across Monmouthshire.



## Children and Young People Engagement 2020 & 2021

We wanted as many people involved as we could in order to better reflect the needs of the whole community. Therefore, we particularly wanted to encourage children and young people to share their own views so that their voices were heard, and so that they had a say in the development of their communities.



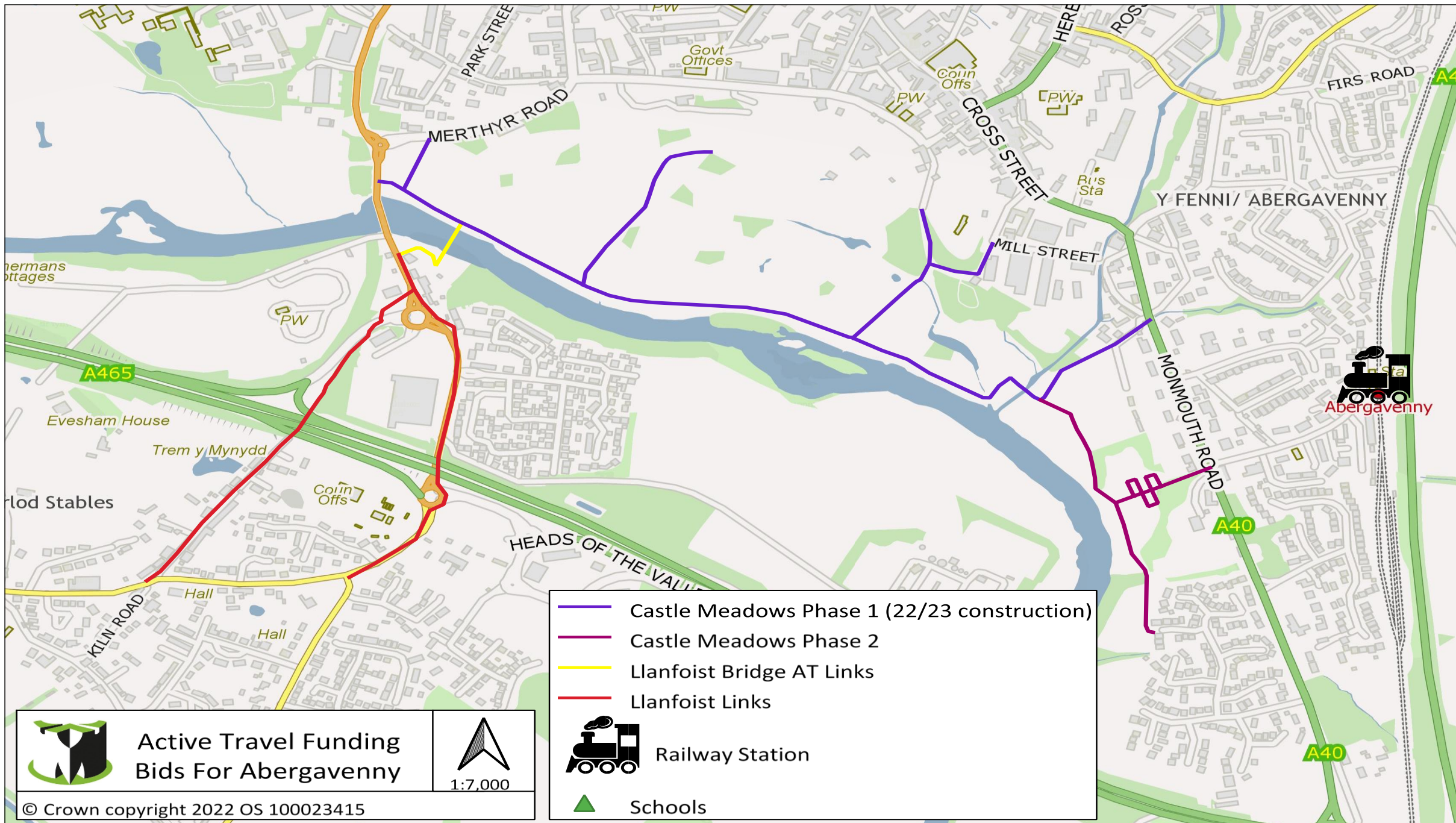


# Current Progress of Schemes

- In previous years 3 package bids have been submitted as per guidelines.
- This year the guidance changed to allow only construction schemes in strategic bids, but number increased to 4.
- MCC have continued their package bids from previous years to continue with schemes on the ground.
- These bids have been submitted to TfW at end of January for funding for 2022/23, with the outcome expected in March.
- MCC have committed to 7% match funding to support the bidding process.

# 22/23 Active Travel Schemes – Abergavenny

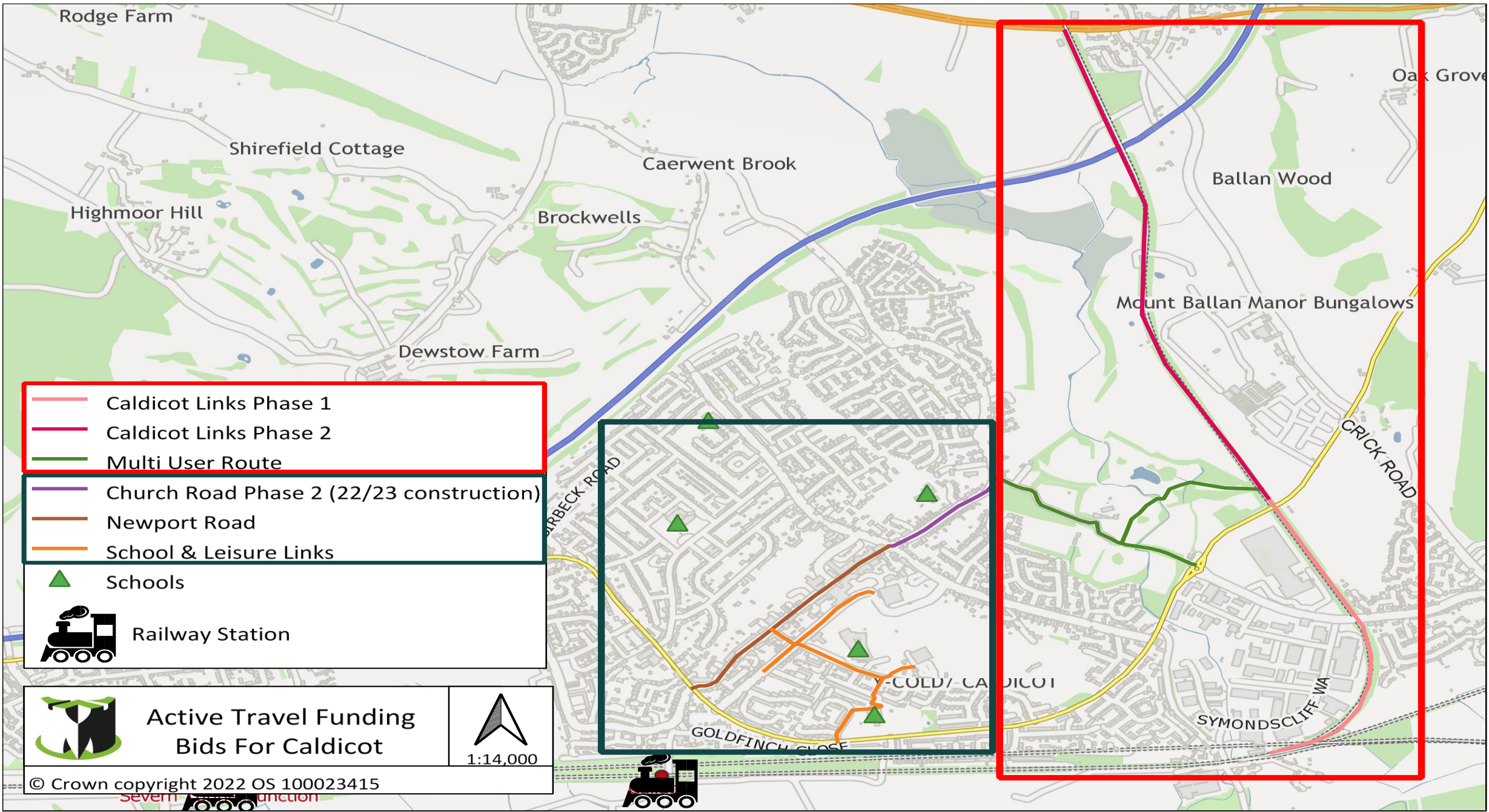
	SCHEME	OVERVIEW
1	<b>Castle Meadows Links (Construction)</b>	The scheme seeks to provide improved Active Travel compliant pedestrian and cycle links across Castle Meadows and Ysbytty Fields linking Llanfoist (via Llanfoist foot and cycle bridge) to Abergavenny Town Centre and Abergavenny Rail Station.
2	<b>Llanfoist foot &amp; cycle Bridge (Scheme Development)</b>	The scheme is listed in the LTP programme as 4 <sup>th</sup> highest non-Metro priority. The scheme is MCC's highest Active Travel INM priority for Abergavenny based on our recent Engagement phase and previous data. The scheme seeks to deliver a new pedestrian/cycle bridge across the River Usk about 50 metres east of the existing Stone bridge which is a Scheduled Monument and Grade II* listed. The new bridge has been sympathetically designed by a renowned bridge Architect and it is proposed that it will become the main river crossing between Llanfoist and Abergavenny for non-motorised users
3	<b>Bridge connections to Llanfoist (Scheme Development)</b>	The scheme seeks to provide improved active travel compliant pedestrian and cycle links between Llanfoist and the new Llanfoist foot and cycle bridge – where pedestrians and cyclists can then continue their journey onwards via Castle Meadows and Ysbytty Fields to Abergavenny Town Centre and Abergavenny Rail Station.





# 22/23 Active Travel Schemes – Caldicot

	SCHEME	OVERVIEW
1	Church Rd (Phase 2)	Upgrade Church Rd, as a key route, to active travel design standards in order to change travel behaviour linked to current needs and future planned growth. Also connect the eastern side links for residents to employment, education and local services as well as onto public transport nodes. Upgrade links between employment sites at Mitel, Castlegate and Severnbridge Industrial Estate with the Castle and Country Park acting as a key off-road link between key neighbourhoods as well as providing a future link into the “Greenway route”.
2	Caldicot Links and Multi User Route	The 2.81km long railway line was acquired in late 2019 by Monmouthshire County. This work seek to create a new dedicated walking/cycling and in places horse riding, multi-user route. The route will be accessible for residents and visitors of the communities Portskewett, Caldicot and Caerwent to access key destinations of employment and services. The design of the project will be undertaken in this financial year.
3	Newport Road	This proposal is to enhance Newport Road, west of ongoing improvements at the ‘Cross’, through the town centre and on to the B4245 – the key arterial route serving Caldicot, its neighbourhoods and the surrounding villages of Severnside.
4	Education and Leisure Links	Take the recommendations of the WelTAG 1 study completed in Q4 2021/22 through the WelTAG process to the detailed design stage. This project plays an essential role in the Caldicot network, providing improved access to 2 educational settings, leisure facilities, health establishments and all other key localities within the town centre.



Rodge Farm

Shirefield Cottage

Caerwent Brook

Oak Grove

Highmoor Hill

Brockwells

Ballan Wood

Dewstow Farm

Mount Ballan Manor Bungalows

Caldicot Links Phase 1

Caldicot Links Phase 2

Multi User Route

Church Road Phase 2 (22/23 construction)

Newport Road

School & Leisure Links

Schools

Railway Station

Active Travel Funding  
Bids For Caldicot

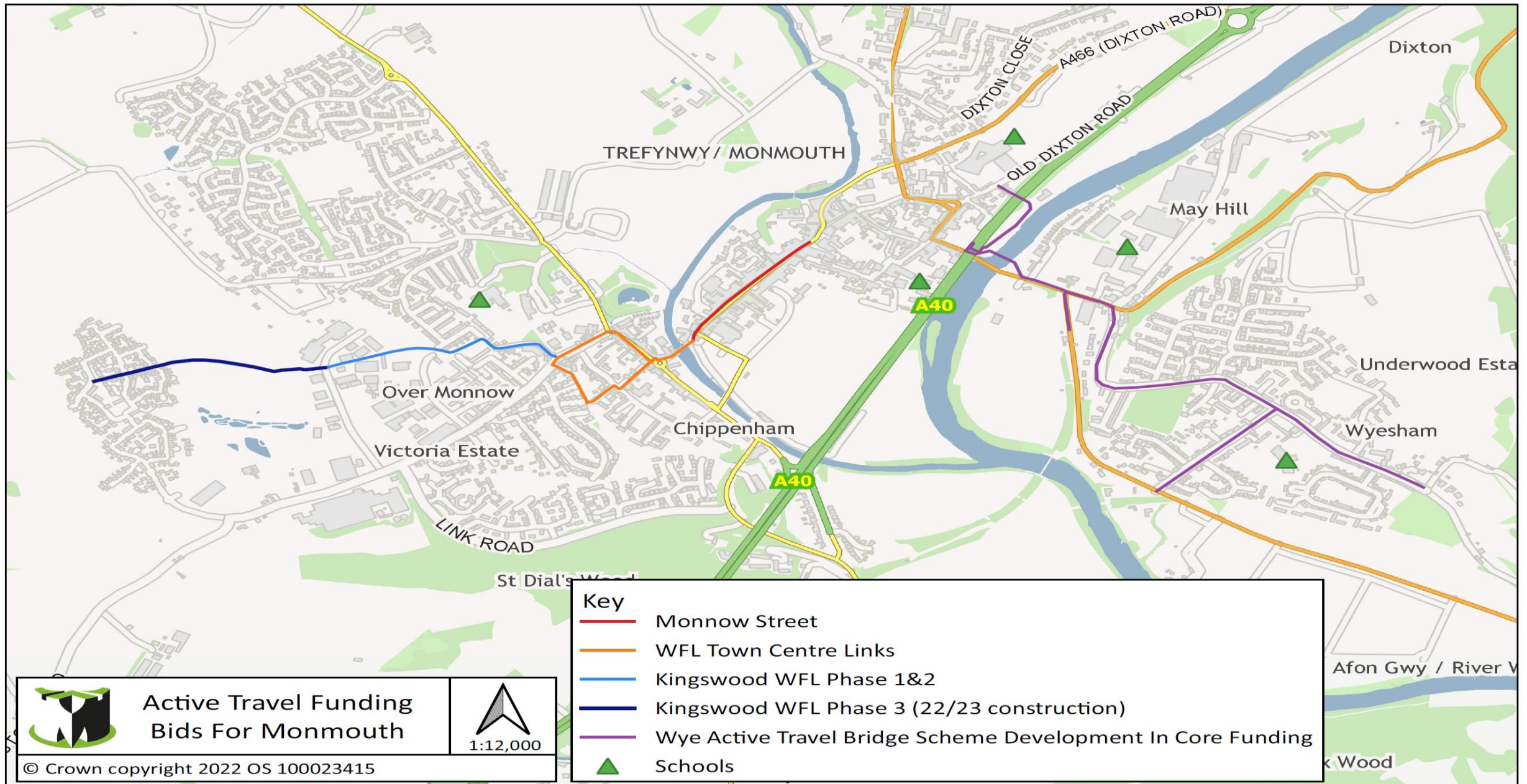
1:14,000

© Crown copyright 2022 OS 100023415

# 22/23 Active Travel Schemes – Monmouth

	SCHEME	OVERVIEW
1	<b>Kingswood Gate – Williams Field Lane Link (phase 3)</b>	Complete the third phase (of a three-phase scheme) of a critically important route. The public response to the Active Travel Consultation in 2020 identified this route as one that needed significant improvement. This scheme will upgrade an existing off road informal path to create a new route to Active Travel standards. Phase 2 will be completed by the end of Mar 2022.
2	<b>Monnow Street feasibility</b>	Continue with the WelTAG process in order to achieve a shortlist of options moving on to detailed design. This scheme connects Monnow St, Monnow Bridge, ending before the roundabout on Drybridge Street
3	<b>Williams Field Lane – Town Centre Links</b>	Assess the feasibility (WelTAG 2) of creating improved walking and cycling connections between the start of Williams Field Lane and the town centre. The feasibility study will include traffic counts, pedestrian counts. Pedestrian path analysis, vehicular speeds, usage studies, and safety assessments – building on base line data captured during 21/22. Post consultation (Q4 21/22), the chosen scheme will be developed through WelTAG3 and onto detail design and construction.
4	<b>Wye AT Crossing &amp; Wyesham Links</b>	The current Wye Bridge has been identified as the key obstacle for active travel between Wyesham and Monmouth town centre. This years program will look to gain planning permission for the proposed bridge and complete the detailed design, with the aim to secure funding for construction in FY 23/24.





# Core Funding – County Wide Impact

Primary  
School Cycling  
Infrastructure

Severn Tunnel  
Junction – Access  
Improvements

Safe Routes  
To Schools

Chepstow  
Transport  
Study  
Support

Gilwern –  
Whole Settlement  
Transport  
Assessment

Pre Planning  
Active Travel  
Feedback

Primary  
School Active  
Travel  
Trackers

Access Barrier Removal –  
Monmouthshire To  
Become NCN Barrier Free

Burns  
Report  
Feedback

4X  
Secondary  
School  
Modelling

Abergavenny – KHS  
0-18y Through School  
– Early Project  
Engagement

User Friendly  
Settlement  
AT maps

Town Centre  
Cycling  
Infrastructure

Cycle  
Training

2X  
Member  
Seminars

Thank you for your time

Any Questions?



monmouthshire  
sir fynwy

